

4K YKD-9210/YKD-9211 UHD Endoscope Camera System

**Realize Your Vision
Gather Your Thoughts**





Company Profile

- **Xuzhou AKX Electronic Science and Technology Co.,Ltd** is a National High-tech Enterprise dedicated to research, production, sale and service of medical imaging products. Since the establishment, it has made all efforts to the application and product innovation of medical imaging technology in the medical field.
- The company has established three product brands  **IKEDA®**, **IKEDA®** and **AKX®**, currently has 25 national patents, and has passed the **ISO13485** international quality system certification and EU **CE** product certification. **The products have passed the FDA registration in the United States, the ANVISA registration in Brazil, the NSIS in Italy, and the registration in Mexico, Egypt, Ukraine, Peru, Thailand, Indonesia, Iraq, Vietnam and many other countries.**
- After more than ten years of development, it has become a leading research and development manufacturer of digital electronic colposcope and endoscope camera system equipment at home and abroad.
- The products are being exported to more than **116 countries and regions** in the world, including Europe, North America, South America, the Middle East, Southeast Asia and Africa. The excellent instrument quality and fine after-sales service have won wide acclaim from users.

PROFESSIONAL OEM & ODM ENDOSCOPY SYSTEM MANUFACTURER



**MADE IN IKEDA products exported
to more than 116 countries and regions**

Certifications



CE MARKED

35 MEDICAL DEVICE

ISO 13485

MEDICAL DEVICES

FDA REGISTERED

2 ENDOSCOPY SYSTEMS

As a result of market size, market share, growth rate, and other indicators, Research & Market, a global market research association, has identified China's IKEDA as one of the top 10 most promising brands in endoscopy imaging for the next decade.



Endoscopic Camera Systems Market - Global Industry Analysis, Size, Share, Growth, Trends, and Forecast, 2021 - 2031

Report | 196 Pages | September 2021 | Region: Global | Transparency Market Research
ID: 5472623

Companies Mentioned

A selection of companies mentioned in this report includes:

- Olympus
- Stryker
- Shenzhen Mindray Bio-Medical Electronics Co.,Ltd
- SCHOLLY FINEROPTIC GMBH
- Gummu GmbH
- B.Braun Melsungen AG
- KARL STORZ
- Xuzhou AKX Electronic Science And Technology Co., Ltd.
- MEDIT INC
- Richard Wolf GmbH



One Camera- Multiple Usage



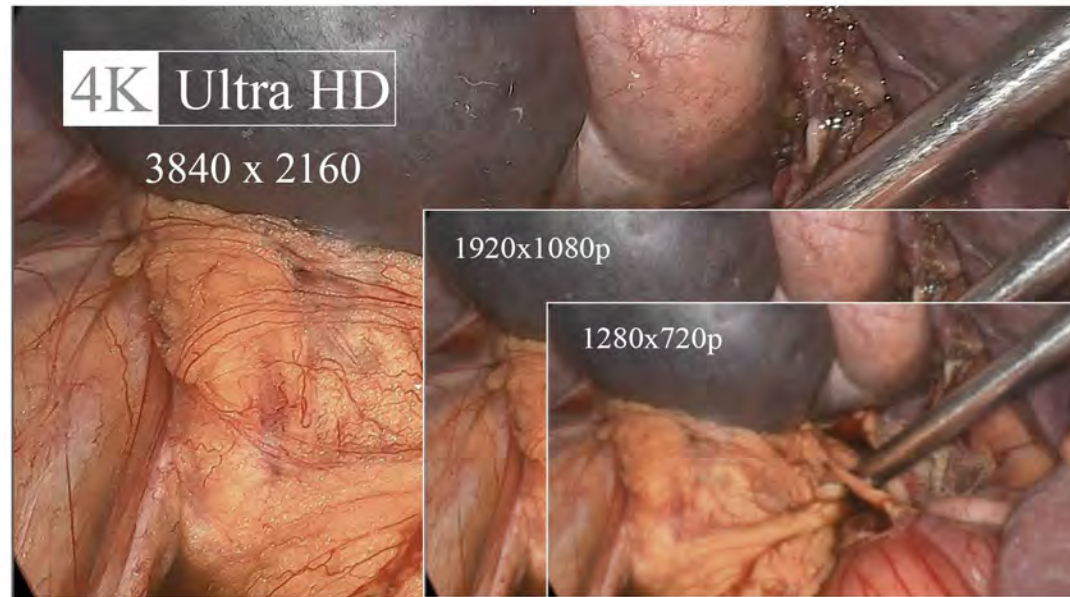
YKD-9210/9211
4K UHD Medical Endoscope Camera System



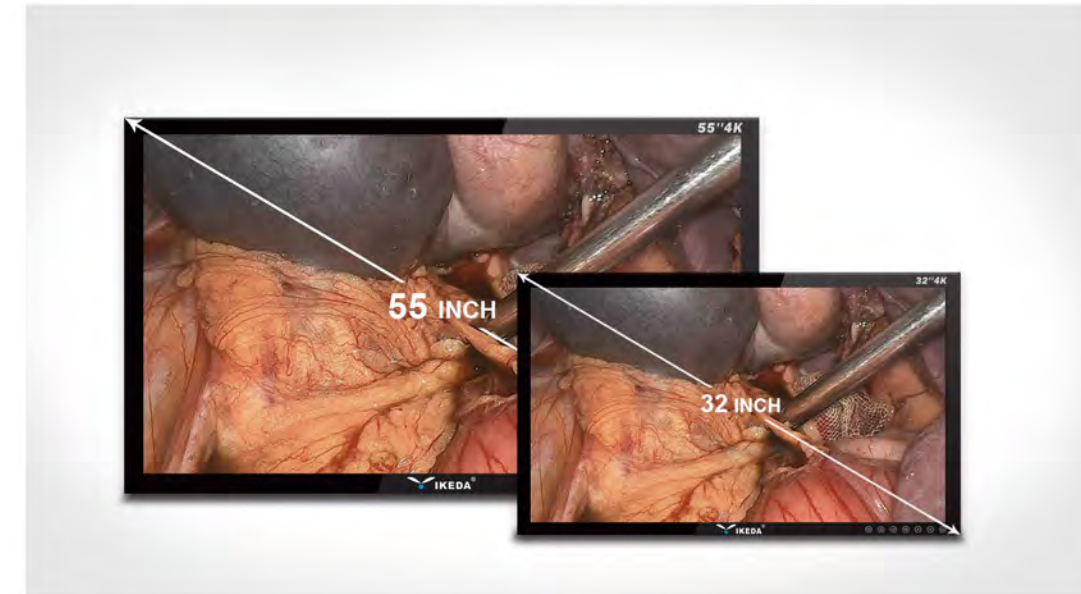
Product Features



1 4K Ultra HD definition



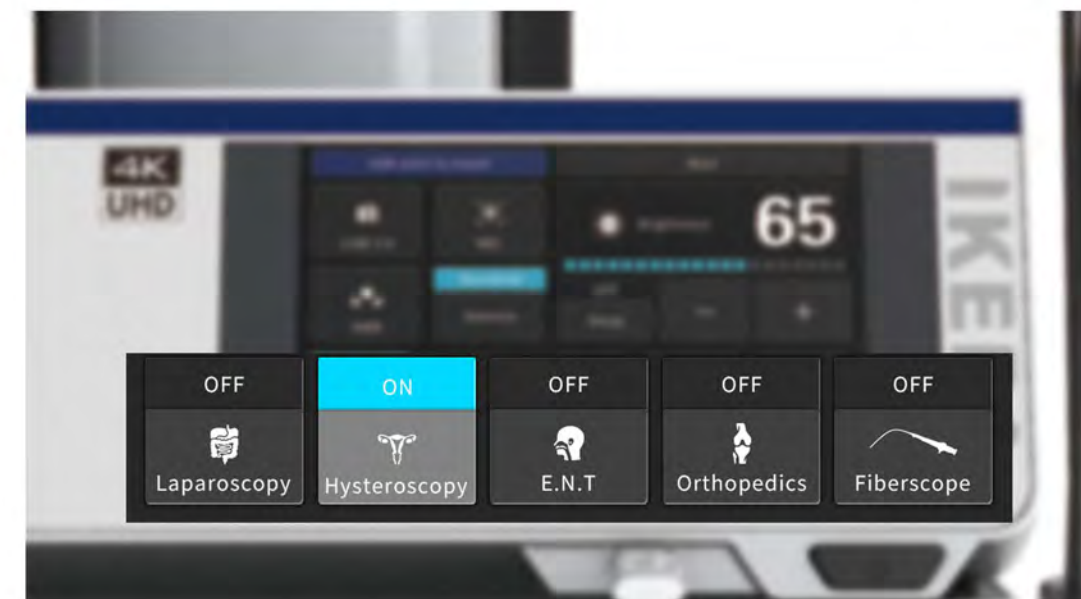
3 Large view filed and Large picture



2 Built-in USB storage



4 Five surgical procedure modes, one-key switching



YKD-9210

4K UHD Medical Endoscope Camera System



Main page 1



Main page 2

Product Features

- 4K UHD resolution
- Universal c-mount threading
- Integrated LED light source
- Image enhancement of colour and structure
- Multilingual menu, 7 inch touch screen
- Photo capture, Video recording, Zoom
- 5 USER Presets for surgical application

Technical Data

Camera head	· UHD imaging (3840 x 2160) · 1/2.5 inch SONY CMOS · IPX8 waterproof
Voltage range (current consumption)	· 100-240 V (50 VA)
Frequency	· 50-60 Hz
Device protection	· 2x T3,15 A
Video system	· Image resolution: UHD 3840 x 2160 · Horizontal resolution: 1800 TVL · SNR: 50DB, Tolerance 20% · Scanning system: Progressive Scanning · White balance automatically
Screen size	· 7 inch
Light source	· Built-in 80W LED cold light source
Recording (optional)	· Image format: JPG 1920 x 1080 · Video format: Full HD 1920 x 1080; Mpeg-4 (H.264 Codec); Image rate 60fps · Connection: USB
Connections	Video out terminal: · 1x HDMI 2.0 (3840 x 2160) · 1x DVI · 1x 3G-SDI
Protection class (acc.to IEC 60601-1)	· I
Safety class	· BF
Standard	· IEC 60601-1-2
Device classification (EU) 2017/745, annex VIII	· I
Features	· White balance · Freeze function · Zoom in/Zoom out · Touch Buttons/Touch Screen · USB storage · Photo capture/Video recording
Language	· Chinese/English/Japanese/Korean/Spanish/German/Russian
Dimensions	· 461(L)x353(W)x190(H)
Weight	· 6KG

YKD-9210

4K UHD Endoscopy Solution



■ 4K 55 Inch Monitor

55" / 32"
CE/ROHS/FCC CERTIFIED
Anti-Glare
Full-laminated

■ 4K Zoom Coupler

4K resolution
Stable Clarity After Focusing

■ 4K Camera

4K IPX-8 waterproof grade
User-Definable : Photo Capture/Video Recording/
Zoom in/Zoom Out/White Balance

■ YKD-9210

■ YKD-2100

6000 Series Aluminum Alloy
Electrostatic Adsorption Coating
Cable Management Box
Adjustable Layer Height
4" Universal Silent Castors



Recommended collocation

Programme 1

Equipped with
4K 55 inch monitor



Programme 2

Equipped with
4K 32 inch monitor



Laparoscopes

- Ultra High-resolution images compatible with 4K camera system
- Scratch-resistant sapphire lens
- Fog reduction function
- Autoclavable lens
- Compatible with third-party optical fiber cables

Wolf adapter, Storz adapter, ACMI adapter



Product list

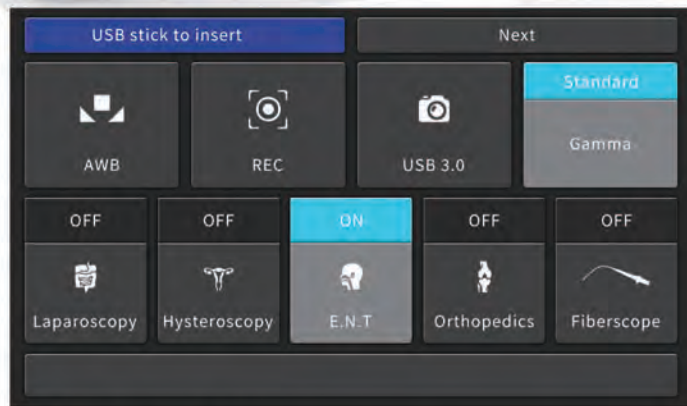
Video Processor	YKD-9210
4K Monitor	YKD-8155/YKD-8132
Trolley	YKD-2100
4K Camera	
Endoscope	(Matching)

YKD-9211

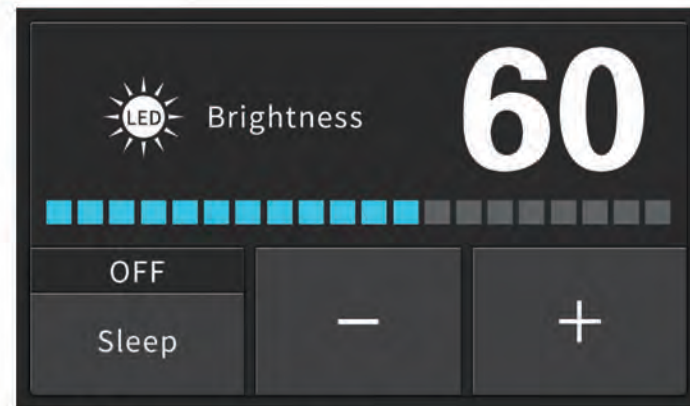
4K UHD Medical Endoscope Camera System



YKD-9107-T
 Light output comparable to "300 W Xenon"
 Lifespan of the illuminant > 30.000 h
 Low power consumption
 LCD display showing luminance level and status information



9211 main page



9107-T main page

Product Features

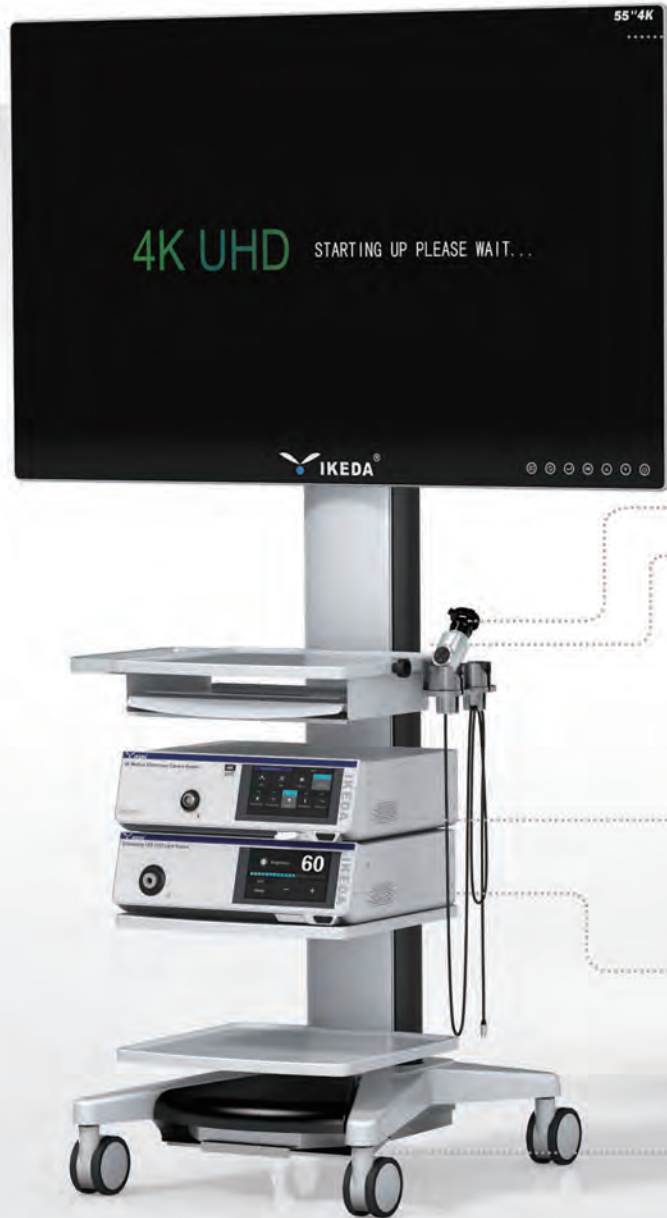
- 4K UHD resolution
- Universal c-mount threading
- Image enhancement of colour and structure
- Multilingual menu, 7 inch touch screen
- Photo capture, Video recording, Zoom
- 5 USER Presets for surgical application

Technical Data

Camera head	<ul style="list-style-type: none"> · UHD imaging (3840 x 2160) · 1/2.5 inch SONY CMOS · IPX8 waterproof
Voltage range (current consumption)	· 100-240 V (50 VA)
Frequency	· 50-60 Hz
Device protection	· 2x T3,15 A
Video system	<ul style="list-style-type: none"> · Image resolution: UHD 3840 x 2160 · Horizontal resolution: 1800 TVL · SNR: 50DB, Tolerance 20% · Scanning system: Progressive Scanning · White balance automatically
Screen size	· 7 inch
Recording (optional)	<ul style="list-style-type: none"> · Image format: JPG 1920 x 1080 · Video format: Full HD 1920 x 1080; Mpeg-4 (H.264 Codec); Image rate 60fps · Connection: USB
Connections	Video out terminal: <ul style="list-style-type: none"> · 1x HDMI 2.0 (3840 x 2160) · 1x DVI · 1x 3G-SDI
Protection class (acc.to IEC 60601-1)	· I
Safety class	· BF
Standard	· IEC 60601-1-2
Device classification (EU) 2017/745, annex VIII	· I
Features	<ul style="list-style-type: none"> · White balance · Freeze function · Zoom in/Zoom out · Touch Buttons/Touch Screen · USB storage · Photo capture/Video recording
Language	· Chinese/English/Japanese/Korean/Spanish/German/Russian
Dimensions	· 461(L)x353(W)x190(H)
Weight	· 6KG

YKD-9211

4K UHD Endoscopy Solution



■ 4K 55 Inch Monitor

55" / 32"
CE/ROHS/FCC CERTIFIED
Anti-Glare
Full-laminated

■ 4K Zoom Coupler

4K resolution
Stable Clarity After Focusing

■ 4K Camera

4K IPX-8 waterproof grade
User-Definable : Photo Capture/Video Recording/
Zoom in/Zoom Out/White Balance

■ YKD-9211

■ YKD-9107-T

80W LED Cold Light Source

■ YKD-2100

6000 Series Aluminum Alloy
Electrostatic Adsorption Coating
Cable Management Box
Adjustable Layer Height
4" Universal Silent Castors



Recommended collocation

Programme 1

Equipped with
4K 55 inch monitor



Programme 2

Equipped with
4K 32 inch monitor



Laparoscopes

- Ultra High-resolution images compatible with 4K camera system
- Scratch-resistant sapphire lens
- Fog reduction function
- Autoclavable lens
- Compatible with third-party optical fiber cables

Wolf adapter, Storz adapter, ACMI adapter



Product list

Video Processor	YKD-9211
LED Light source	YKD-9107-T
4K Monitor	YKD-8155/YKD-8132
Trolley	YKD-2100
4K Camera	(Matching)
Endoscope	(Matching)

One Camera- Multiple Usage



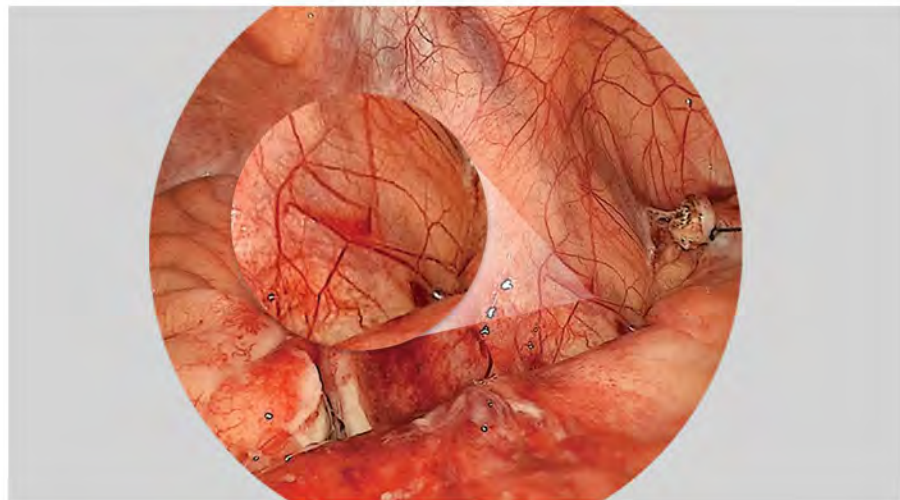
YKD-9102-T/9103-T
FULL HD Endoscope System

Product Features

1 1/2.3 SONY CMOS FULL HD Image Sensor



2 Zoom coupler, Stable clarity after focusing



5 Built-in USB storage



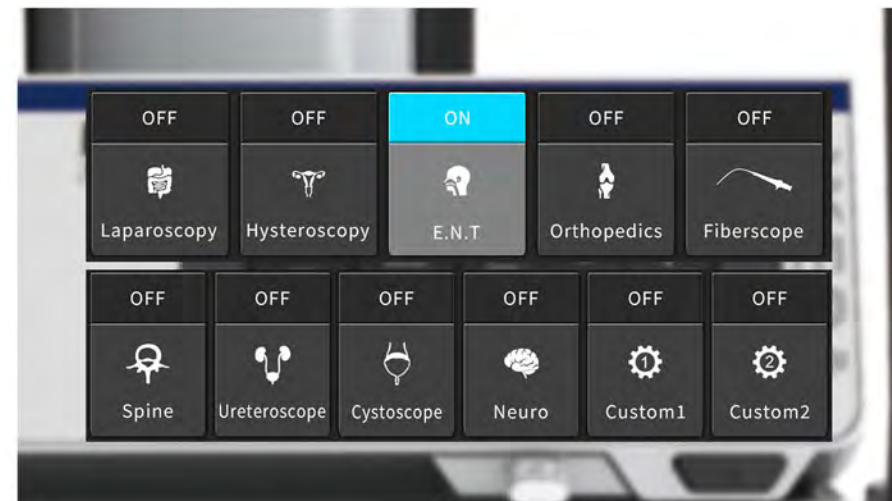
3 Can be matched with stroboscopic light source for stroboscopic laryngoscopy



4 IPX8 waterproof camera



6 Eleven surgical procedure modes, one-key switching

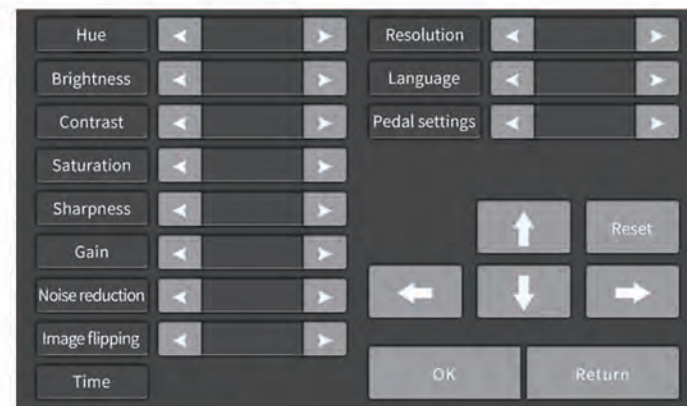


YKD-9102-T

FULL HD Endoscope System



Main page 1



Main page 2

Product Features

- 1/2.3 SONY CMOS FULL HD Image Sensor
- Can be matched with stroboscopic light source for stroboscopic laryngoscopy
- FHD camera head and LED cold light source integrated
- Built-in USB FULL HD image storage, Integrated photo/video recording system
- 11 surgical modes are optional
- IPX8 waterproof camera

Technical Data

Camera head	<ul style="list-style-type: none"> · Full HD imaging (1920 x 1080) · 1/2.3" SONY CMOS · IPX8 waterproof · Full HD optical coupler C-mount standard
Voltage range (current consumption)	· 100-240 V (50 VA)
Frequency	· 50-60 Hz
Device protection	· 2x T3,15 A
Video system	<ul style="list-style-type: none"> · Image resolution: FHD 1920 x 1080 · Horizontal resolution: ≥900 TVL · SNR: 60DB, Tolerance 20% · Scanning system: Progressive Scanning · White balance automatically
Screen size	· 7 inch
Recording (optional)	<ul style="list-style-type: none"> · Image format: JPG 1920 x 1080 · Video format: Full HD 1920 x 1080; Mpeg-4 (H.264 Codec); Image rate 60fps · Connection: USB
Connections	Video out terminal: <ul style="list-style-type: none"> · 1x DVI · 1x HDMI · 1x CVBS
Protection class (acc.to IEC 60601-1)	· I
Safety class	· BF
Standard	· IEC 60601-1-2
Device classification (EU) 2017/745, annex VIII	· I
Features	<ul style="list-style-type: none"> · White balance · Freeze function · Zoom in/Zoom out · Touch Buttons/Touch Screen · USB storage · Photo capture/Video recording
Language	· Chinese/English/Japanese/Korean/Spanish/German/Russian
Dimensions	·
Weight	·

YKD-9103-T

FULL HD Endoscope System

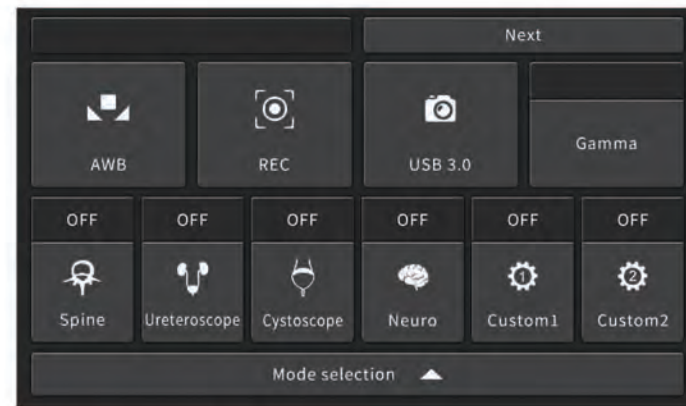


YKD-9107-T

Light output comparable to "300 W Xenon"
 Lifespan of the illuminant > 30.000 h
 Low power consumption
 LCD display showing luminance level and status information



9103-T main page 1



9103-T main page 2

Product Features

- 1/2.3 SONY CMOS FULL HD Image Sensor
- Can be matched with stroboscopic light source for stroboscopic laryngoscopy
- Built-in USB FULL HD image storage, Integrated photo/video recording system
- 11 surgical modes are optional
- IPX8 waterproof camera

Technical Data

Camera head	<ul style="list-style-type: none"> · Full HD imaging (1920 x 1080) · 1/2.3" SONY CMOS · IPX8 waterproof · Full HD optical coupler C-mount standard
Voltage range (current consumption)	· 100-240 V (50 VA)
Frequency	· 50-60 Hz
Device protection	· 2x T3,15 A
Video system	<ul style="list-style-type: none"> · Image resolution: FHD 1920 x 1080 · Horizontal resolution: ≥900 TVL · SNR: 60DB, Tolerance 20% · Scanning system: Progressive Scanning · White balance automatically
Screen size	· 7 inch
Recording (optional)	<ul style="list-style-type: none"> · Image format: JPG 1920 x 1080 · Video format: Full HD 1920 x 1080; Mpeg-4 (H.264 Codec); Image rate 60fps · Connection: USB
Connections	<p>Video out terminal:</p> <ul style="list-style-type: none"> · 1x DVI · 1x HDMI · 1x CVBS
Protection class (acc.to IEC 60601-1)	· I
Safety class	· BF
Standard	· IEC 60601-1-2
Device classification (EU) 2017/745, annex VIII	· I
Features	<ul style="list-style-type: none"> · White balance · Freeze function · Zoom in/Zoom out · Touch Buttons/Touch Screen · USB storage · Photo capture/Video recording
Language	· Chinese/English/Japanese/Korean/Spanish/German/Russian
Dimensions	· 461(L)x353(W)x150(H)
Weight	· 6KG

YKD-9102-T

FULL HD Endoscope System



■ 4K 32 Inch Monitor

55" / 32"
CE/ROHS/FCC CERTIFIED
Anti-Glare
Full-laminated

■ FHD Camera

FHD IPX-8 waterproof grade
User-Definable : Photo Capture/Video Recording/
Zoom in/Zoom Out/White Balance

■ YKD-9102-T

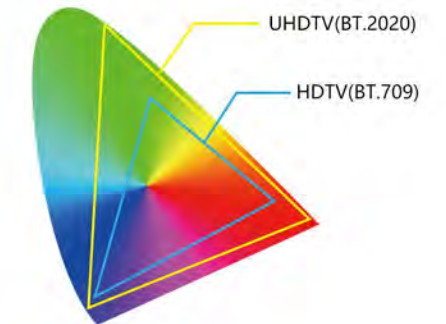
■ YKD-2100

6000 Series Aluminum Alloy
Electrostatic Adsorption Coating
Cable Management Box
Adjustable Layer Height
4" Universal Silent Castors

Recommended collocation

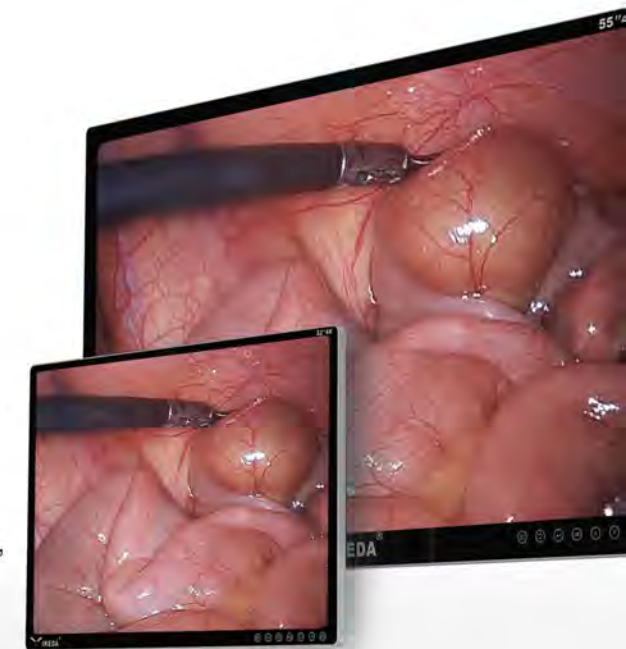
Programme 1

Equipped with
YKD-2100 Trolley



Monitor

- 3840x2160 ultra-high-definition image output, showing richer textures and more accurate tissue identification
- 3840x2160 pixel image output, showing richer texture, more accurate tissue identification
- Wider color gamut, truly restore the color of organs and tissues, and locate blood vessels, lymph nodes and nerves faster



Product list

Video Processor	YKD-9102-T
4K Monitor	YKD-8132
Trolley	YKD-2100/YKD-2101
4K Camera	
Endoscope	(Matching)

YKD-9103-T

FULL HD Endoscope System



■ 4K 32 Inch Monitor

55" / 32"
CE/ROHS/FCC CERTIFIED
Anti-Glare
Full-laminated

■ FHD Camera

FHD IPX-8 waterproof grade
User-Definable : Photo Capture/Video Recording/
Zoom in/Zoom Out/White Balance

■ YKD-9103-T

■ YKD-9107-T

■ YKD-2100

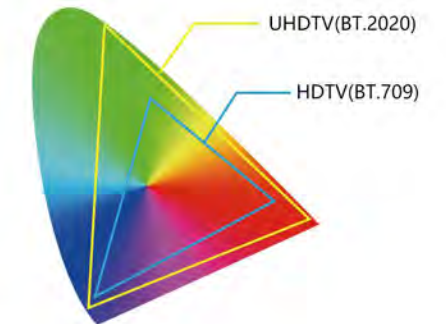
6000 Series Aluminum Alloy
Electrostatic Adsorption Coating
Cable Management Box
Adjustable Layer Height
4" Universal Silent Castors



Recommended collocation

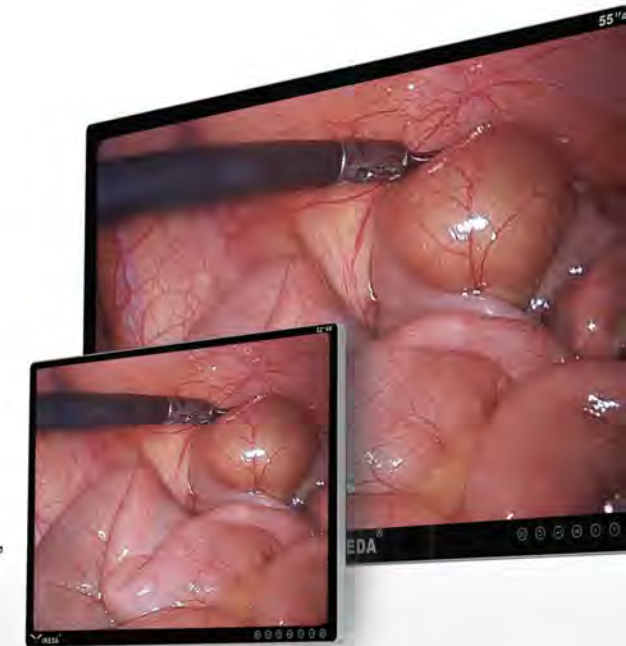
Programme 1

Equipped with
YKD-2100 Trolley



Monitor

- 3840x2160 ultra-high-definition image output, showing richer textures and more accurate tissue identification
- 3840x2160 pixel image output, showing richer texture, more accurate tissue identification
- Wider color gamut, truly restore the color of organs and tissues, and locate blood vessels, lymph nodes and nerves faster



Product list

Video Processor	YKD-9103-T
LED Cold Light Source	YKD-9107-T
4K Monitor	YKD-8132
Trolley	YKD-2100/YKD-2101
4K Camera	
Endoscope	(Matching)

New Design 1/2.3" SNOY CMOS Sensor



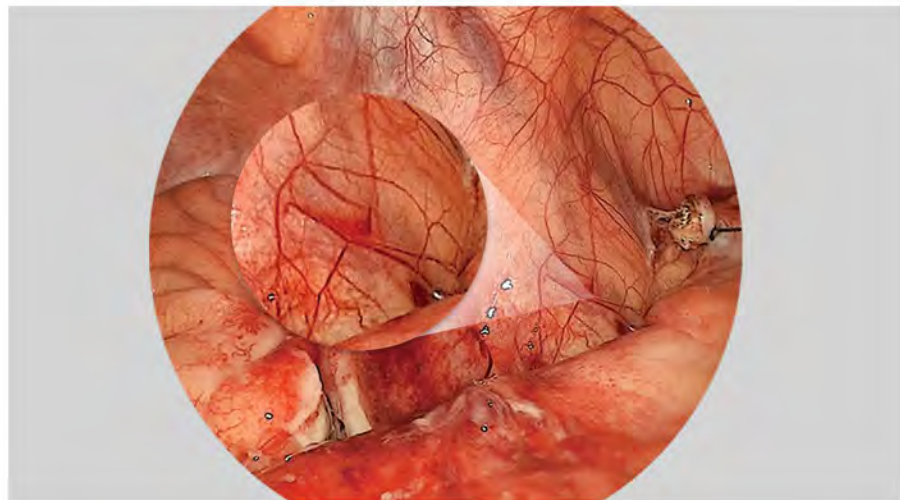
TELE - Portable All-in-1 Endoscopy System

Product Features

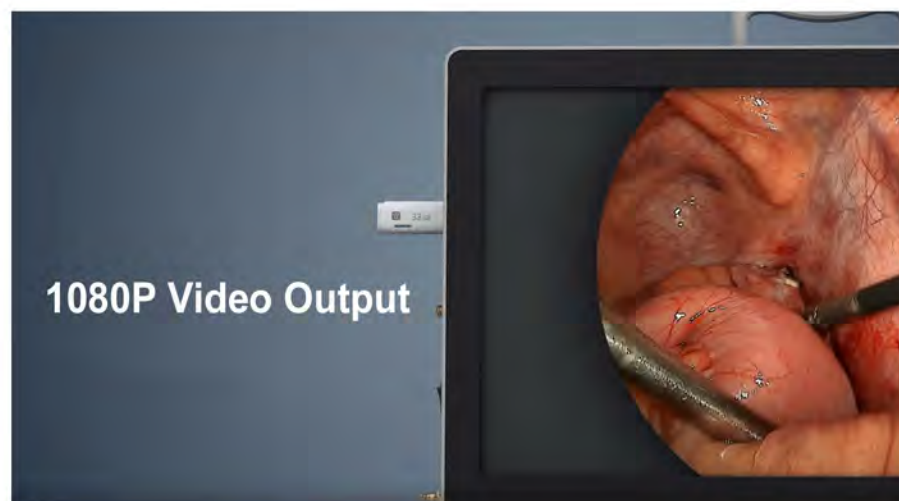
1 1/2.3 SONY CMOS FULL HD Image Sensor



2 Zoom coupler, Stable clarity after focusing



5 Built-in USB storage



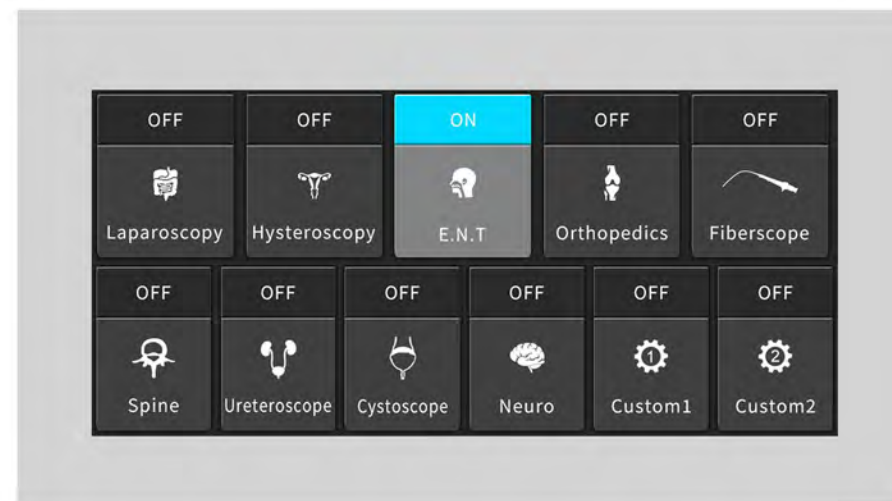
3 Can be matched with stroboscopic light source for stroboscopic laryngoscopy



4 IPX8 waterproof camera



6 Eleven surgical procedure modes, one-key switching



YKD-9122H

FULL HD Endoscope System



New Features

With video recording playback function

Professional medical grade monitor and drivers

Product Features

- 1/2.3 SONY CMOS FULL HD Image Sensor
- Can be matched with stroboscopic light source for stroboscopic laryngoscopy
- FHD camera head and LED cold light source integrated
- Built-in USB FULL HD image storage, Integrated photo/video recording system
- Universal C-mount threading
- IPX8 waterproof camera



Technical Data

Camera head	· Full HD imaging (1920 x 1080) · 1/2.3" SONY CMOS · IPX8 waterproof · Full HD optical coupler C-mount standard
Voltage range (current consumption)	· 100-240 V (50 VA)
Frequency	· 50-60 Hz
Device protection	· 2x T3,15 A
Video system	· Image resolution: FHD 1920 x 1080 · Horizontal resolution: ≥900 TVL · SNR: 50DB, Tolerance 20% · Scanning system: Progressive Scanning · White balance automatically
Monitor	· 22 inch
Light source	· Built-in 80W LED cold light source
Recording (optional)	· Image format: JPG 1920 x 1080 · Video format: Full HD 1920 x 1080; Mpeg-4 (H.264 Codec); Image rate 60fps · Connection: USB
Connections	Video out terminal: · 1x DVI · 1x HDMI · 1x CVBS
Protection class (acc.to IEC 60601-1)	· I
Safety class	· BF
Standard	· IEC 60601-1-2
Device classification (EU) 2017/745, annex VIII	· I
Features	· White balance · Freeze function · Zoom in/Zoom out · Touch Buttons · USB storage · Photo capture/Video recording
Language	· Chinese/English/Japanese
Dimensions	· 528(L)x105(W)x370(H)
Weight	· 9.85KG

YKD-9132H

FULL HD Endoscope System



New Features

With video recording playback function

Use 4K monitor (3840*2160)

Product Features

- 1/2.3 SONY CMOS FULL HD Image Sensor
- Can be matched with stroboscopic light source for stroboscopic laryngoscopy
- FHD camera head and LED cold light source integrated
- Built-in USB FULL HD image storage, Integrated photo/video recording system
- Universal C-mount threading
- IPX8 waterproof camera



Technical Data

Camera head	· Full HD imaging (1920 x 1080) · 1/2.3" SONY CMOS · IPX8 waterproof · Full HD optical coupler C-mount standard
Voltage range (current consumption)	· 100-240 V (50 VA)
Frequency	· 50-60 Hz
Device protection	· 2x T3,15 A
Video system	· Image resolution: FHD 1920 x 1080 · Horizontal resolution: ≥900 TVL · SNR: 50DB, Tolerance 20% · Scanning system: Progressive Scanning · White balance automatically
Monitor	· 4K 32 inch
Light source	· Built-in 80W LED cold light source
Recording (optional)	· Image format: JPG 1920 x 1080 · Video format: Full HD 1920 x 1080; Mpeg-4 (H.264 Codec); Image rate 60fps · Connection: USB
Connections	Video out terminal: · 1x DVI · 1x HDMI · 1x CVBS
Protection class (acc.to IEC 60601-1)	· I
Safety class	· BF
Standard	· IEC 60601-1-2
Device classification (EU) 2017/745, annex VIII	· I
Features	· White balance · Freeze function · Zoom in/Zoom out · Touch Buttons · USB storage · Photo capture/Video recording
Language	· Chinese/English/Japanese
Dimensions	· 759(L)x487(W)x103(H)
Weight	· 16 KG

YKD-9115-T

FULL HD Endoscope System



Product Features

- 1/2.3 SONY CMOS FULL HD Image Sensor
- Can be matched with stroboscopic light source for stroboscopic laryngoscopy
- FHD camera head and LED cold light source integrated
- Built-in USB FULL HD image storage, Integrated photo/video recording system
- Universal C-mount threading
- IPX8 waterproof camera



Technical Data

Camera head	· Full HD imaging (1920 x 1080) · 1/2.3" SONY CMOS · IPX8 waterproof · Full HD optical coupler C-mount standard
Voltage range (current consumption)	· 100-240 V (50 VA)
Frequency	· 50-60 Hz
Device protection	· 2x T3,15 A
Video system	· Image resolution: FHD 1920 x 1080 · Horizontal resolution: ≥900 TVL · SNR: 50DB, Tolerance 20% · Scanning system: Progressive Scanning · White balance automatically
Monitor	· 15 inch
Light source	· Built-in 80W LED cold light source
Recording (optional)	· Image format: JPG 1920 x 1080 · Video format: Full HD 1920 x 1080; Mpeg-4 (H.264 Codec); Image rate 60fps · Connection: USB
Connections	Video out terminal: · 1x DVI · 1x HDMI · 1x CVBS
Protection class (acc.to IEC 60601-1)	· I
Safety class	· BF
Standard	· IEC 60601-1-2
Device classification (EU) 2017/745, annex VIII	· I
Features	· White balance · Freeze function · Zoom in/Zoom out · Touch Buttons · USB storage · Photo capture/Video recording
Language	· Chinese/English/Japanese
Dimensions	· 759(L)x487(W)x103(H)
Weight	· 16 KG

YKD-9119-T

FULL HD Endoscope System



Product Features

- 1/2.3 SONY CMOS FULL HD Image Sensor
- Can be matched with stroboscopic light source for stroboscopic laryngoscopy
- FHD camera head and LED cold light source integrated
- Built-in USB FULL HD image storage, Integrated photo/video recording system
- Universal C-mount threading
- IPX8 waterproof camera



Technical Data

Camera head	· Full HD imaging (1920 x 1080) · 1/2.3" SONY CMOS · IPX8 waterproof · Full HD optical coupler C-mount standard
Voltage range (current consumption)	· 100-240 V (50 VA)
Frequency	· 50-60 Hz
Device protection	· 2x T3,15 A
Video system	· Image resolution: FHD 1920 x 1080 · Horizontal resolution: ≥900 TVL · SNR: 50DB, Tolerance 20% · Scanning system: Progressive Scanning · White balance automatically
Monitor	· 19 inch
Light source	· Built-in 80W LED cold light source
Recording (optional)	· Image format: JPG 1920 x 1080 · Video format: Full HD 1920 x 1080; Mpeg-4 (H.264 Codec); Image rate 60fps · Connection: USB
Connections	Video out terminal: · 1x DVI · 1x HDMI · 1x CVBS
Protection class (acc.to IEC 60601-1)	· I
Safety class	· BF
Standard	· IEC 60601-1-2
Device classification (EU) 2017/745, annex VIII	· I
Features	· White balance · Freeze function · Zoom in/Zoom out · Touch Buttons · USB storage · Photo capture/Video recording
Language	· Chinese/English/Japanese
Dimensions	· 759(L)x487(W)x103(H)
Weight	· 16 KG



YKD-9100

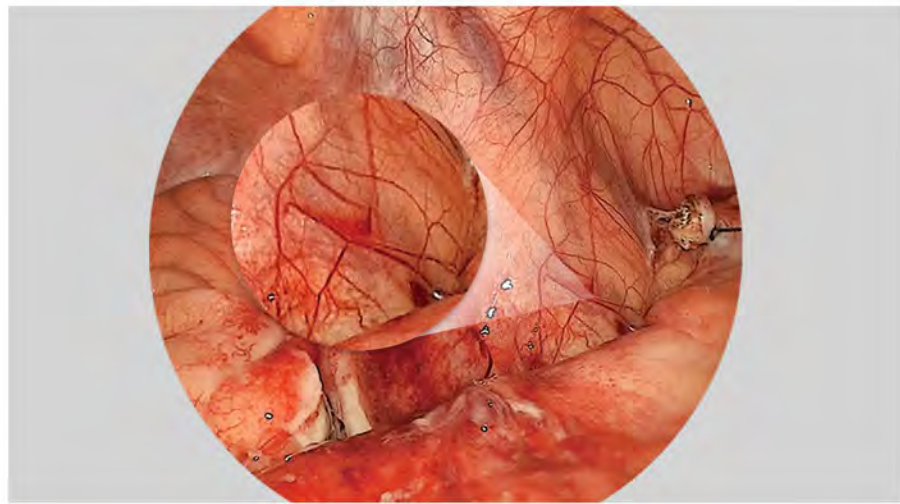
FHD Endoscope System

Product Features

1 1/2.3 SONY CMOS FULL HD Image Sensor



2 Zoom coupler, Stable clarity after focusing



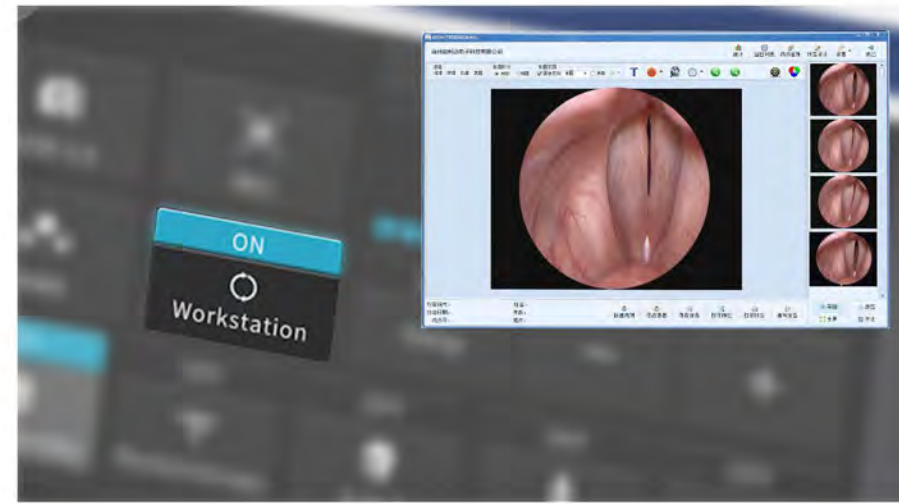
5 Built-in USB storage



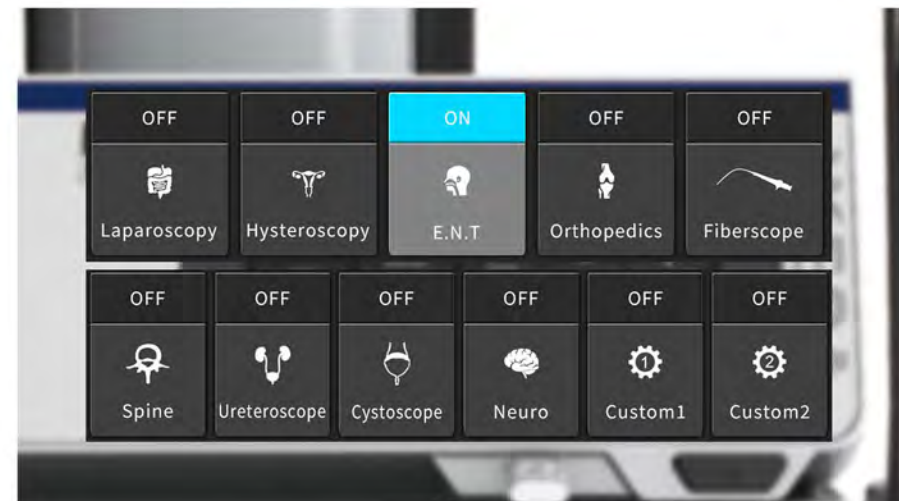
3 Can be matched with stroboscopic light source for stroboscopic laryngoscopy



4 Built-in high-definition imaging workstation



6 Eleven surgical procedure modes, one-key switching



YKD-9100

FHD Endoscope System



Main page 1



Main page 2

Product Features

- 1/2.3 SONY CMOS FULL HD Image Sensor;
- Can be matched with stroboscopic light source for stroboscopic laryngoscopy;
- 19-inch FHD monitor, FHD camera head, and LED cold light source integrated;
- Built-in high-definition imaging workstation, Examination/surgery mode, one-key switching;
- Built-in USB FULL HD image storage, Integrated photo/video recording system;
- 11 surgical modes are optional;
- IPX8 waterproof camera;

Technical Data

Camera head	<ul style="list-style-type: none">· Full HD imaging (1920 x 1080)· 1/2.3" SONY CMOS· IPX8 waterproof· Full HD optical coupler C-mount standard
Voltage range (current consumption)	<ul style="list-style-type: none">· 100-240 V (50 VA)
Frequency	<ul style="list-style-type: none">· 50-60 Hz
Device protection	<ul style="list-style-type: none">· 2x T3,15 A
Video system	<ul style="list-style-type: none">· Image resolution: FHD 1920 x 1080· Horizontal resolution: ≥900 TVL· SNR: 60DB, Tolerance 20%· Scanning system: Progressive Scanning· White balance automatically
Screen size	<ul style="list-style-type: none">· 7 inch
Light source	<ul style="list-style-type: none">· Built-in 80W LED cold light source
Recording (optional)	<ul style="list-style-type: none">· Image format: JPG 1920 x 1080· Video format: Full HD 1920 x 1080; Mpeg-4 (H.264 Codec); Image rate 60fps· Connection: USB
Connections	<p>Video out terminal:</p> <ul style="list-style-type: none">· 1x DVI· 1x HDMI· 1x CVBS
Protection class (acc.to IEC 60601-1)	<ul style="list-style-type: none">· I
Safety class	<ul style="list-style-type: none">· BF
Standard	<ul style="list-style-type: none">· IEC 60601-1-2
Device classification (EU) 2017/745, annex VIII	<ul style="list-style-type: none">· I
Features	<ul style="list-style-type: none">· White balance· Freeze function· Zoom in/Zoom out· Touch Buttons/Touch Screen· USB storage· Photo capture/Video recording
Language	<ul style="list-style-type: none">· Chinese/English/Japanese/Korean/Spanish/German/Russian
Dimensions	<ul style="list-style-type: none">· 461(L)x353(W)x150(H)
Weight	<ul style="list-style-type: none">· 6KG

YKD-9100

FHD Endoscope System



■ 4K 32 Inch Monitor

55" / 32"
CE/ROHS/FCC CERTIFIED
Anti-Glare
Full-laminated

■ FHD Camera

FHD IPX-8 waterproof grade
User-Definable : Photo Capture/Video Recording/
Zoom in/Zoom Out/White Balance

■ YKD-9102-T

■ YKD-2100

6000 Series Aluminum Alloy
Electrostatic Adsorption Coating
Cable Management Box
Adjustable Layer Height
4" Universal Silent Castors



Recommended collocation

Programme 1

Equipped with
4K 32 inch monitor

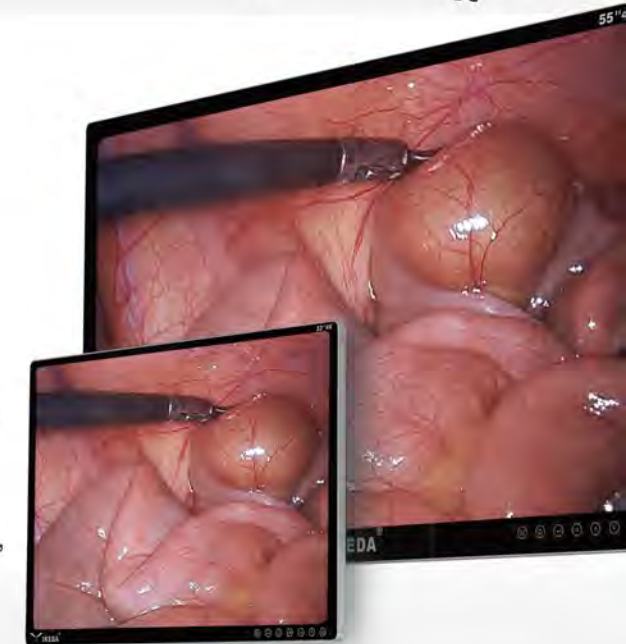


Programme 2



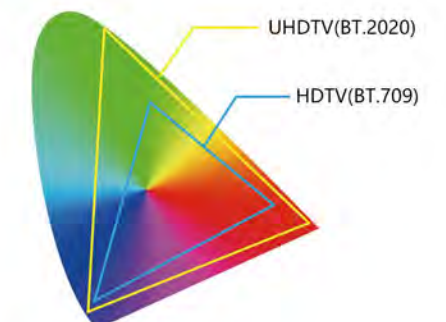
Monitor

- 3840x2160 ultra-high-definition image output, showing richer textures and more accurate tissue identification
- 3840x2160 pixel image output, showing richer texture, more accurate tissue identification
- Wider color gamut, truly restore the color of organs and tissues, and locate blood vessels, lymph nodes and nerves faster



Product list

Video Processor	YKD-9100
4K Monitor	YKD-8155/YKD-8132
Trolley	YKD-2100
FHD Camera	
Endoscope	(Matching)





YKD-9101

FHD Endoscope System

YKD-9101

FHD Endoscope System

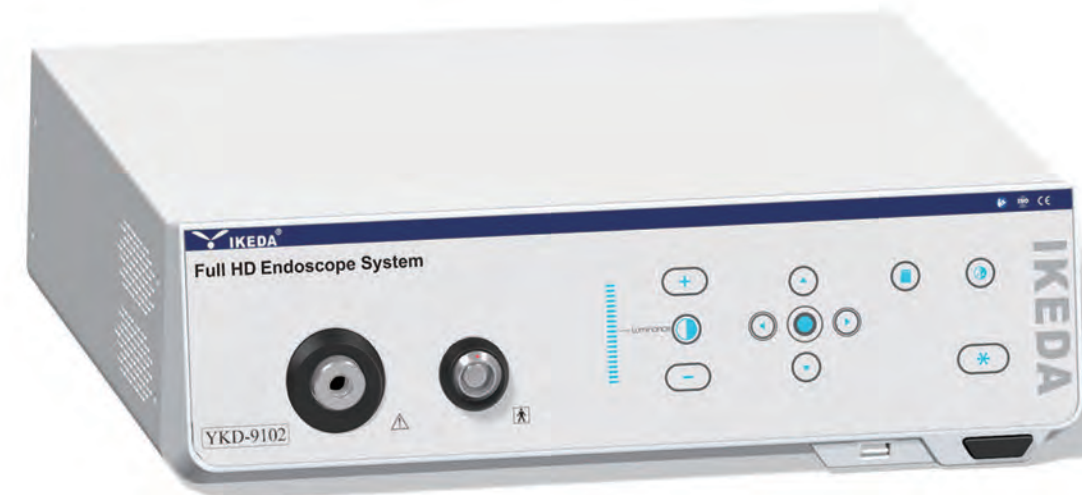
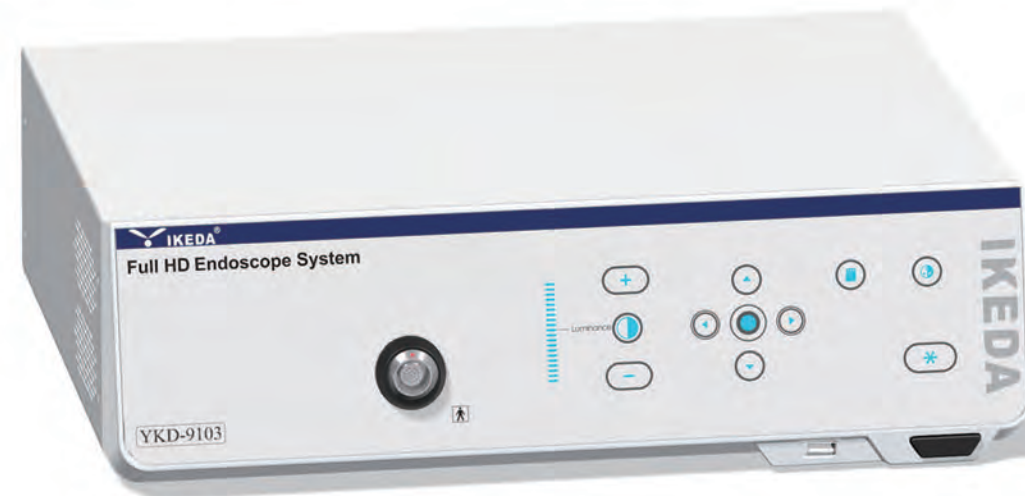


Product Features

- 1/2.3 SONY CMOS FULL HD Image Sensor;
- Can be matched with stroboscopic light source for stroboscopic laryngoscopy;
- 19-inch FHD monitor, FHD camera head, and LED cold light source integrated;
- Built-in high-definition imaging workstation, Examination/surgery mode, one-key switching;
- Built-in USB FULL HD image storage, Integrated photo/video recording system;
- 11 surgical modes are optional;
- IPX8 waterproof camera;

Technical Data

Camera head	· Full HD imaging (1920 x 1080) · 1/2.3" SONY CMOS · IPX8 waterproof · Full HD optical coupler C-mount standard
Voltage range (current consumption)	· 100-240 V (50 VA)
Frequency	· 50-60 Hz
Device protection	· 2x T3,15 A
Video system	· Image resolution: FHD 1920 x 1080 · Horizontal resolution: ≥900 TVL · SNR: 60DB, Tolerance 20% · Scanning system: Progressive Scanning · White balance automatically
Screen size	· 19 inch
Light source	· Built-in 80W LED cold light source
Recording (optional)	· Image format: JPG 1920 x 1080 · Video format: Full HD 1920 x 1080; Mpeg-4 (H.264 Codec); Image rate 60fps · Connection: USB
Connections	Video out terminal: · 1x DVI · 1x HDMI · 1x CVBS
Protection class (acc.to IEC 60601-1)	· I
Safety class	· BF
Standard	· IEC 60601-1-2
Device classification (EU) 2017/745, annex VIII	· I
Features	· White balance · Freeze function · Zoom in/Zoom out · Touch Buttons/Touch Screen · USB storage · Photo capture/Video recording
Language	· Chinese/English/Japanese/Korean/Spanish/German/Russian
Dimensions	· 461(L)x353(W)x150(H)
Weight	· 6KG



FULL HD
Endoscope Camera System

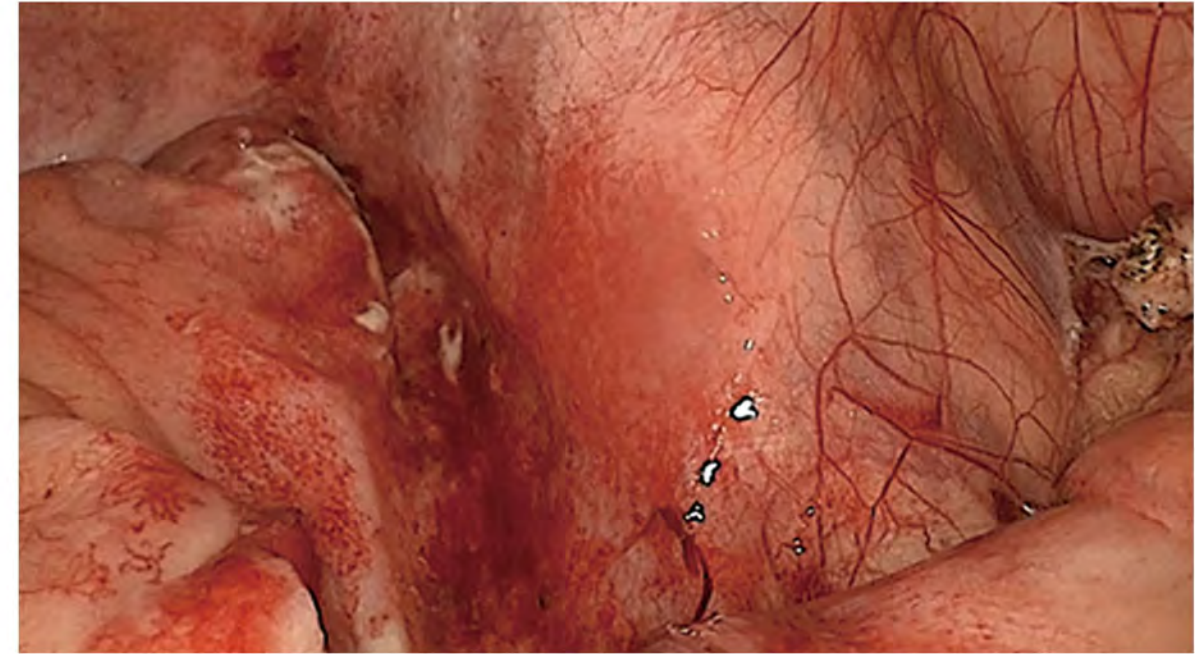
Product Features



1 1/2.8 SONY CMOS FULL HD Image Sensor



3 IPX8 waterproof camera



2 Built-in USB storage



4 IPX8 waterproof camera



Product Features





Endoscope Camera	
	<p>YKD-9006 Built-in USB Full HD image storage, Photo capture/Video recording function Built-in LED cold light source The integrated design of LED cold light source and camera</p> <p>Dimensions: Weight:</p>
	<p>YKD-9007 Built-in USB Full HD image storage, Photo capture/Video recording function</p> <p>Dimensions: Weight:</p>
	<p>YKD-9001E-T Built-in USB Full HD image storage, Photo capture/Video recording function Built-in LED cold light source The integrated design of LED cold light source and camera</p> <p>Dimensions: Weight:</p>
	<p>YKD-9103E-T Built-in USB Full HD image storage, Photo capture/Video recording function</p> <p>Dimensions: Weight:</p>

- 1/2.8 SONY CMOS FULL HD Image Sensor
- Built-in USB FULL HD image storage, Integrated photo/video recording system
- IPX8 waterproof camera
- Touch button, easy to clean

Technical Data

Camera head	<ul style="list-style-type: none"> · Full HD imaging (1920 x 1080) · 1/2.8" SONY CMOS · IPX8 waterproof · Full HD optical coupler C-mount standard
Voltage range (current consumption)	· 100-240 V (50 VA)
Frequency	· 50-60 Hz
Device protection	· 2x T3, 15 A
Video system	<ul style="list-style-type: none"> · Image resolution: FHD 1920 x 1080 · Horizontal resolution: ≥900 TVL · SNR: 60DB, Tolerance 20% · Scanning system: Progressive Scanning · White balance automatically
Screen size	· 5 inch
Recording (optional)	<ul style="list-style-type: none"> · Image format: JPG 1920 x 1080 · Video format: Full HD 1920 x 1080; Mpeg-4 (H.264 Codec); Image rate 60fps · Connection: USB
Connections	Video out terminal: <ul style="list-style-type: none"> · 1x DVI · 1x HDMI · 1x CVBS
Protection class (acc.to IEC 60601-1)	· I
Safety class	· BF
Standard	· IEC 60601-1-2
Device classification (EU) 2017/745, annex VIII	· I
Features	<ul style="list-style-type: none"> · White balance · Freeze function · Zoom in/Zoom out · Touch Buttons/Touch Screen · USB storage · Photo capture/Video recording
Language	· Chinese/English/Japanese/Korean/Spanish/German/Russian

Product Features

Endoscope Camera	
	<p>YKD-9001E Built-in USB Full HD image storage, Photo capture/Video recording function Built-in LED cold light source The integrated design of LED cold light source and camera</p> <p>Dimensions: Weight:</p>
	<p>YKD-9103E Built-in USB Full HD image storage, Photo capture/Video recording function</p> <p>Dimensions: Weight:</p>
	<p>YKD-9102 Built-in USB Full HD image storage, Photo capture/Video recording function Built-in LED cold light source The integrated design of LED cold light source and camera</p> <p>Dimensions: Weight:</p>
	<p>YKD-9103 Built-in USB Full HD image storage, Photo capture/Video recording function</p> <p>Dimensions: Weight:</p>

- 1/2.8 SONY CMOS FULL HD Image Sensor
- Built-in USB FULL HD image storage, Integrated photo/video recording system
- IPX8 waterproof camera

Technical Data

Camera head	<ul style="list-style-type: none"> · Full HD imaging (1920 x 1080) · 1/2.8" SONY CMOS · IPX8 waterproof · Full HD optical coupler C-mount standard
Voltage range (current consumption)	· 100-240 V (50 VA)
Frequency	· 50-60 Hz
Device protection	· 2x T3,15 A
Video system	<ul style="list-style-type: none"> · Image resolution: FHD 1920 x 1080 · Horizontal resolution: ≥900 TVL · SNR: 60DB, Tolerance 20% · Scanning system: Progressive Scanning · White balance automatically
Recording (optional)	<ul style="list-style-type: none"> · Image format: JPG 1920 x 1080 · Video format: Full HD 1920 x 1080; Mpeg-4 (H.264 Codec); Image rate 60fps · Connection: USB
Connections	Video out terminal: <ul style="list-style-type: none"> · 1x DVI · 1x HDMI · 1x CVBS
Protection class (acc.to IEC 60601-1)	· I
Safety class	· BF
Standard	· IEC 60601-1-2
Device classification (EU) 2017/745, annex VIII	· I
Features	<ul style="list-style-type: none"> · White balance · Freeze function · Zoom in/Zoom out · Touch Buttons/Touch Screen · USB storage · Photo capture/Video recording
Language	· Chinese/English/Japanese/Korean/Spanish/German/Russian



FULL HD Endoscope Camera System



LED Cold Light Source

Product Features

IMPORTANT:

Use only high-performance light cables / high-temperature-resistant light guides!

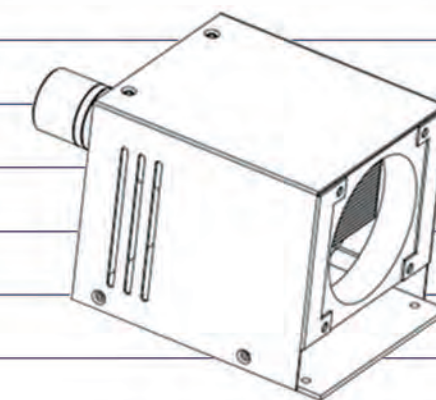


Endoscope Camera

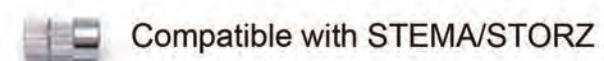
	<p>YKD-9021 5 inch touch screen 80W LED cold light source Luminous flux≥800Lm</p> <p>Dimensions: Weight:</p>
	<p>YKD-9107E 80W LED cold light source Luminous flux≥800Lm</p> <p>Dimensions: Weight:</p>
	<p>YKD-9107E-T 5 inch touch screen 80W LED cold light source Luminous flux≥800Lm</p> <p>Dimensions: Weight:</p>
	<p>YKD-9107 7 inch touch screen 80W LED cold light source Luminous flux≥1500Lm</p> <p>Dimensions: Weight:</p>
	<p>Portable light source DC power supply time: 5h Charging time: 3h Color temperature: 5500-6500k 5-10w LED Light Illumination>200000 Lux</p>  <p>Weight:58.5g</p>

Technical Data

Light source:	· 80W LED cold light source
Lifetime:	· >50000 hours
Voltage range (current consumption):	· 100-240 V (130 VA)
Frequency:	· 50-60 Hz
Device protection:	· 2x T3,15 A
Color rendering index	· ≥90
Color temperature	· 5000K~7000K
Protection class (acc.to IEC 60601-1):	· I
Safety class:	· BE
Standard:	· IEC 60601-1-2
Device classification (EU) 2017/745, annex VIII:	· I
Control:	· Touch Buttons
Output hole size:	· 10mm±0.1mm



• CONNECTOR TO ENDOSCOPE



• CONNECTOR TO LIGHT SOURCE



FIBER OPTIC CABLE